



# Secure, Cloud-Managed Wi-Fi

## Secure, Simple, Intelligent.

Offering basic Wi-Fi access doesn't give you a competitive advantage, it offers you a chance to compete. With benefits ranging from increased productivity to improved customer satisfaction, implementing a wireless network for your employees and guests has become the table stakes of doing business. But Wi-Fi also opens your business to significant security risks, and can be complicated to deploy and manage, not to mention expensive. WatchGuard's Secure Wi-Fi Solution, a true game-changer in today's market, is engineered to provide a safe, protected airspace for your Wi-Fi environments, while eliminating administrative headaches and greatly reducing costs. With expansive engagement tools and visibility into business analytics, it delivers the competitive advantage your business needs to succeed.

### Enterprise-Grade Wireless Intrusion Prevention System (WIPS)

Our cloud-managed access points have built-in WIPS to help ensure you have the protection you need. Using patented Marker Packet technology, WatchGuard WIPS defends your airspace from unauthorized devices, man-in-the-middle and denial-of-service attacks, rogue APs and more – and with close to zero false positives. For even greater protection, deploy our APs with a WatchGuard Firebox® to extend the Firebox's best-in-class UTM defenses, like application control and zero day malware protection, to your WLAN.

### Management That Scales

With the WatchGuard Wi-Fi Cloud, IT pros can enjoy an entirely controller-less Wi-Fi management experience including setup, configuration, monitoring, troubleshooting, and improving corporate and guest Wi-Fi access, without worrying about the limitations of legacy controller infrastructure. Wi-Fi Cloud environments easily scale from one to an unlimited number of APs across multiple locations. APs can be grouped in many ways including location, building, floor, and customer to maintain consistent policies.

### Ruthless on Performance

WatchGuard APs come standard with RF optimization, spectrum monitoring, and trouble-shooting built in, which is vastly more reliable than competing solutions that rely on a connection to a management cloud. Incorporating the latest 802.11ac standards, you'll have speeds of up to 1.3 Gbps over the air, without sacrificing security.

### Engage with People and Gain Visibility into Business Analytics

The WatchGuard Wi-Fi Cloud delivers unprecedented visibility into every corner of your wireless environment, and beyond. Customizable dashboards and alerts provide a comprehensive overview and the ability to drill down for a more granular view. Business owners, now more than ever, need to leverage technology to get the most bang from their marketing budgets and have concrete data around site metrics like footfall, dwell time, and conversion to drive business decisions. Don't waste money on three separate products (for Wi-Fi access, splash pages, analytics), when WatchGuard's Wi-Fi Cloud gives you all three in one interface for all the business metrics you need to make the best decisions to grow.

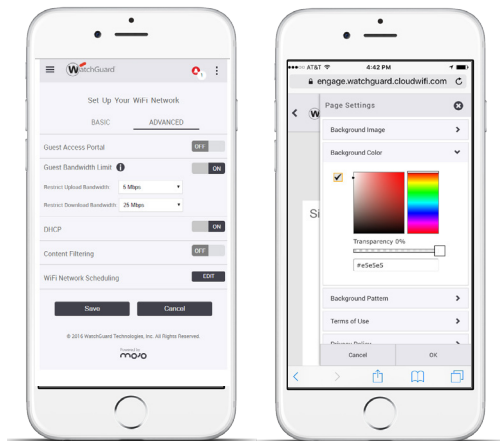
## Flexible Deployment Options

WatchGuard offers three deployment scenarios to meet the needs of SMBs and distributed enterprises. Add an AP120 or AP320 to an existing Firebox UTM-protected network to extend that protection to the WLAN, while managing the device with the Firebox's built-in gateway wireless controller. For full Engage and Analyze features, WIPS protection, scalable management and so much more in a stand-alone deployment, choose our Wi-Fi Cloud option. And for ultimate peace of mind, rely on a Firebox UTM-protected network with WatchGuard Wi-Fi Cloud-managed APs to realize the full marketing and security potential of a cloud-managed access point solution.

Features		Wi-Fi Cloud +UTM	Wi-Fi Cloud	UTM Wi-Fi
<b>SECURITY</b>	Total UTM Protection	✓		✓
	Patented Wireless Security and Threat Prevention	✓	✓	
	Friendly Wi-Fi Compliant (URL Filtering)	✓	✓	✓
	Location of Client Devices, Rogue APs	✓	✓	
<b>MANAGEMENT ENGAGEMENT</b>	Analytics (Footfall, VIsit History, Frequency, Dwell Time)	✓	✓	
	Mobile-Friendly Captive Portals	✓	✓	
	Social Wi-Fi	✓	✓	
<b>SIMPLIFIED MANAGEMENT</b>	Cloud-Managed 'controllerless'	✓	✓	
	GO Mobile Web App	✓	✓	
	Location-based Templates	✓	✓	

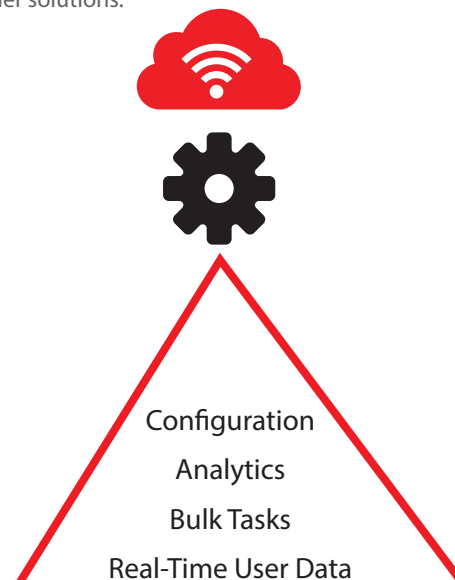
### GO Mobile Web App

The GO mobile web experience allows you to manage your wireless networks using any mobile device. Managing customer engagement is entirely integrated with standard features enabling simple setup of customized splash pages and personalized customer promotions.



### RESTful API

WatchGuard Wi-Fi Cloud is built from the ground up on RESTful APIs to handle even the largest WLAN networks that, until now, would need to be served by on-premises WLAN controller solutions.



## Technical Specifications

The AP120 is built for networks with heavy smartphone and tablet access such as guest or public Wi-Fi environments, or smaller-footprint locations that support limited devices. Common deployment scenarios include branch offices, stores and small classrooms.

The AP320 is perfect for busy environments with diverse client ecosystem and Wi-Fi requirements. This high-horsepower AP can support critical applications like voice, video, and cloud with ease. Common deployment scenarios include offices, classrooms and meeting spaces.

Both are deployable as stand-alone APs, dedicated WIPS sensors, or connected to a UTM Firebox-protected network to extend total UTM protection to the WLAN.

	AP120	AP320
<b>Hardware Details</b>		
Deployment	Indoor	Indoor
Number of Radios	2	2
Supported Frequency Bands	2.4 GHz and 5 GHz concurrent	2.4 GHz and 5 GHz concurrent
Frequency Bands (GHz)*	2.400-2.474GHz, 5.150-5.250GHz, 5.250-5.350GHz, 5.470-5.725GHz, 5.725-5.850GHz	
Number of Antennas	4 internal, omnidirectional	6 internal, omnidirectional
Tx/Rx Streams	2x2 MIMO with 2 spatial streams	3x3 MIMO with 3 spatial streams
Maximum TX Power*	20 dBm	20 dBm
Maximum Data Rate	Up to 866 Mbps for 11ac Up to 300 Mbps for 11n	Up to 1.3 Gbps for 11ac Up to 450 Mbps for 11n
Max SSIDs per Radio	8	8
Security Settings	WPA-PSK, WPA2-PSK, WPA-PSK/WPA2-PSK (Mixed), WPA-802.1X (Enterprise) WPA2-802.1X (Enterprise) WPA-802.1X/WPA2-802.1X (Mixed), TKIP, AES, TKIP/AES, Captive Portal, MAC whitelist/blacklist, VLAN Tagging	
Ethernet	1 x 1 Gb	2 x 1 Gb
Power over Ethernet (PoE)	802.3af/at	
A/C Adapter	Optional	Optional
PoE Injector	Optional	Optional
IEEE Standards Supported	802.11a/b/g/n/ac, 802.11i, 802.1q, 802.1X, 802.3af/at, 802.11e	
Support and Maintenance	1-year or 3-year subscription to Standard Support for hardware warranty with advance hardware replacement, technical support, and software updates - included with purchase	

\* Country-specific restrictions apply

	AP120	AP320
<b>Environmental Information</b>		
Operating Temperature	-4 to 158 °F (-20 to 55 °C)	32 to 104 °F (0 to 40 °C)
Operating Relative Humidity	5%-95% Non-condensing	5%-95% Non-condensing
Storage Temperature	-40 to 158 °F (-40 to 70 °C)	-40°F to 158°F (-40°C to 70°C)
Non-Operating Relative Humidity	5%-95% Non-condensing	5%-95% Non-condensing
<b>AC Power Adapter</b> (optional)		
Input Voltage	100 - 240V	
Input Current Maximum	500mA	
Output Voltage	12V	
Optional PoE Injection available for purchase under SKU number WG8568		
<b>Dimensions</b>		
Product Dimensions	8.26" x 8.26" x 2.6378" 210 x 210 x 67 mm	6.96" x 6.10" x 1.65" 177 x 155 x 42 mm
Shipping Dimensions	12.28" x 10.11" x 3.14" (312 x 257 x 80 mm)	8.54" x 8.34" x 2.51" (217 x 212 x 64 mm)
Product Weight	0.85 lbs (0.38 kg)	0.81 lbs (0.37 kg)
Shipping Weight	1.8 lbs (0.81 kg)	1.09 lbs (0.5 kg)
Mounting Options (included)	Wall/Ceiling	
<b>Certifications</b>		
Wireless	FCC, IC, CE, MIC	
Safety	NRTL/C, CB, CE	
Control of Hazardous Substances	WEEE, RoHS	



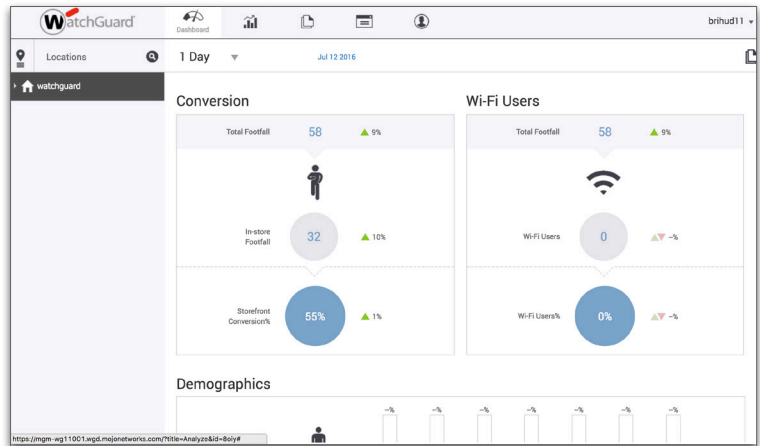
## Reach Out to Mobile Users

Turn your Wi-Fi environment into a potent source of revenue and customer loyalty by leveraging the combined benefits of secure cloud-managed Wi-Fi, captive portal technology, and social media interaction. Use splash pages like the one at right to grab the attention of today's mobile and connected consumers, engage them with videos, polls and surveys, and then take advantage of built-in analytics tools to better understand their habits and preferences.



## Powerful Engagement & Analytics Tools

Gain actionable insights into customers with social login analytics. In combination with the social Wi-Fi features, data can be used to analyze demographic information including gender, age, and customer buying tendencies. Wi-Fi device location, customer dwell time, footfall, and new vs. repeat users can be captured with zone-based analytics. Dashboards and reports allow administrators to quickly view analytics at all levels, from the highest to the most granular view, across time segments and location groups - and there are no hidden third party costs.



## Find out more

WatchGuard has the industry's largest network of value-added resellers and service providers. To get started, visit our website to find the best Partner for your business, or opt to contact us directly and we will answer any questions you may have and get you set up with the perfect Partner for your requirements.

- Browse our Partner network: [findpartner.watchguard.com](http://findpartner.watchguard.com)
- Speak with a WatchGuard security specialist: [www.watchguard.com/wgrd-sales/emailus](http://www.watchguard.com/wgrd-sales/emailus)

## About WatchGuard

WatchGuard has deployed nearly a million integrated, multi-function threat management appliances worldwide. Our signature red boxes are architected to be the industry's smartest, fastest, and meanest security devices with every scanning engine running at full throttle. Headquartered in Seattle, WA, WatchGuard has offices throughout North America, Europe, Asia Pacific, and Latin America.

Visit [www.watchguard.com](http://www.watchguard.com) for details, and check out our InfoSec blog, **Secplicity**, for real-time information about the latest threats and how to cope with them – in an easily understood and actionable way. Go to: [www.watchguard.com/secplicity](http://www.watchguard.com/secplicity).